

Facility Monitoring With Netbotz

Complete Technology Integrations now provides a facility monitoring solution that alerts of water leakage, over temperature, humidity, alarm, intruder or other auxiliary inputs.

Images of the area are emailed to a user or central station. Streaming video can be used to monitor the area or the camera can be accessed via the Internet.

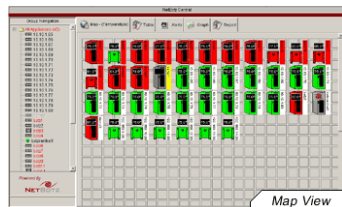
Typical Device Status View

Appliance Sensor View 192.168.1.54

Sensor Data	Current Reading	Alarm Enabled	Past Hour
Temp (°F):	73.0	Yes	7.8
Humidity (%):	47	No	47
Air Flow (ft/min):	40	No	40
Audio Alarm:	No	No	No
Door Switch:	Open	No	Open
Camera Motion:	No Motion	No	No Motion

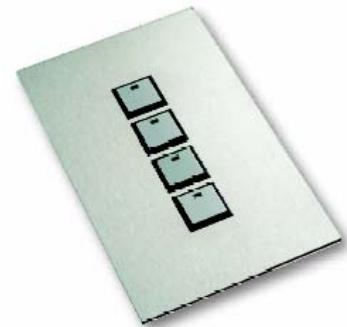
Host	Address	Ping	Vendor	Model	Uptime	SNMP Status
192.168.1.95	192.168.1.95	5	NetBotz	WalBotz 310	42 days, 22:59:21	Available
192.168.2.118	192.168.2.118	5	NetBotz	WalBotz 400	42 days, 22:27:0	Available
192.168.2.17	192.168.2.17	13	NetBotz	WalBotz 400	0	Not Available
192.168.1.1	192.168.1.1	5	NetBotz	WalBotz 400	42 days, 22:27:0	Available
192.168.2.118	192.168.2.118	5	NetBotz	WalBotz 400	42 days, 22:27:0	Available
172.16.3.1	172.16.3.1	5				Unreachable

Reports are available, as is a central monitoring facility for use on campus or multi-site facilities. Below are typical images of the Central monitoring system.



Reflection Switch

The Reflection switch is the latest addition to the Clipsal C-Bus range of inputs. The switch is available from 1 to 8 button and has a screwless stainless steel plate. Buttons are customisable with engraved icons.



Call CTI today for more information on Netbotz.

9887 1000

CTI Training

The next CTI SmartHome training course is scheduled for Friday 2nd May 2003. To reserve your place call CTI today on 02 9887 1000