

Keypads – EURO™ Range



Intelligent buildings with EURO™

EURO™ is a range of European styled keypads for the iCONTROL™ home and building automation system.

Combining classic styling with state of the art technology, EURO™ slim profile keypads are ideal for both residential and commercial projects.

EURO™ is available in a range of keypad plate finishes, with a wide selection of keypad button colours.

Keypad layouts include 1, 2 & 4 button combinations and all keypad buttons are fully programmable. Both keypad plates and buttons can be engraved with a description of the programmed function.

Unique to the iCONTROL™ system are backlit buttons, which provide users with visual feedback about whether lights (or other devices) are turned 'on', 'off', or are controlling a 'scene'.



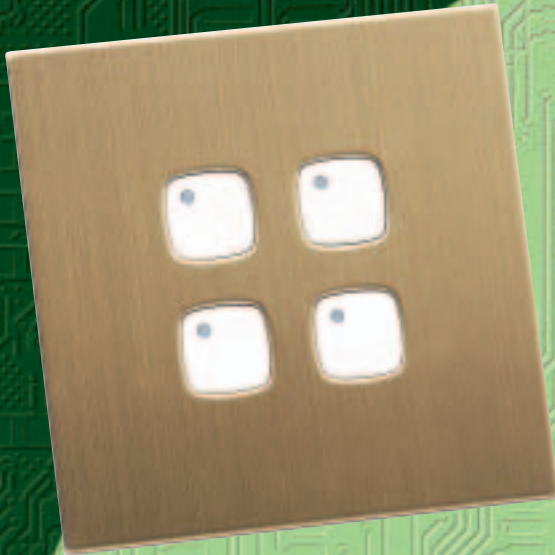
Ease of installation is a key feature of the EURO™ range. Keypad design enables fit off using a diamond tipped core drill suitable for plaster, brick or concrete walls, providing flexibility and convenience for all trades involved in a building project.

EURO™ is designed, engineered and manufactured in Australia, backed by leading Australian electrical manufacturer HPM Industries.



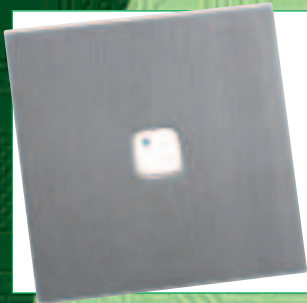
Keypads – EURO™ Range

iCONTROL™



Function: EURO™ keypads are available in a range of metal finishes.

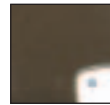
Cat No H2C4-1SSU2WE	LED Indicators Green = On, Red = Off, Orange = Scene	Endurance Switch life > 100,000 operations
Description x Button Keypad (x = 1, 2, 4)	Functions Switch, Dim, Scenes, Panic	Installation Flush mount
		Dimensions 95 x 95 x 21



Function: EURO™ One button screw-less keypad. Engravable buttons.

Cat No H2C1-1SSU2WE	Functions Switch, Dim, Scenes, Panic
LED Indicators Green = On, Red = Off, Orange = Scene	Installation Flush mount
	Dimensions 95 x 95 x 21

EURO™ plates are available in a wide range of finishes and all metal plates can be ordered with or without screws to suit the project.



Polished Gold



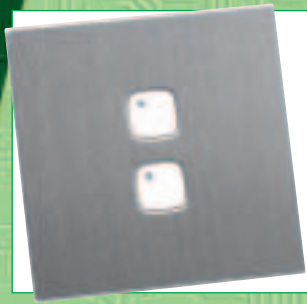
Brushed Gold



Stainless Steel



White



Function: EURO™ Two button screw-less keypad.

Cat No H2C2-1SSU2WE	Functions Switch, Dim, Scenes, Panic
LED Indicators Green = On, Red = Off, Orange = Scene	Installation Flush mount
	Dimensions 95 x 95 x 21

EURO™ coloured hard buttons are engravable.



White



Cream



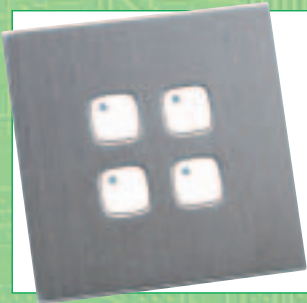
Red



Brown



Black



Function: EURO™ Four button screw-less keypad.

Cat No H2C4-1SSU2WE	Functions Switch, Dim, Scenes, Panic
LED Indicators Green = On, Red = Off, Orange = Scene	Installation Flush mount
	Dimensions 95 x 95 x 21

Easy installation process using EURO™ diamond tipped core drill (H2CUDR1), circular wall box (H2CU) and keypad.

